

EN 54 - 16

VAIE 7M04 1000W / 4 ZONES
VAIE 7M06 1000W / 6 ZONES

Description

The new VAIE 7M00 range includes two integrated voice evacuation systems for emergency facilities, designed specifically for wall-mounting and equipped with control units, certified in compliance with EN54-16:2008 / EN54-4 standards. Depending on the model, these systems are capable of managing from 4 to 6 alarm zones, each driven by a single amplifier, as well as remote microphone stations and controlled inputs to be connected to a central fire-fighting system. It is possible to connect up to a maximum of 6 of these systems to one other (for managing an overall maximum of 36 zones).

The range includes:

VAIE 7M04 - 1000W / 4 zone / double output line (A+B)

VAIE 7M06 - 1000W / 6 zone / double output line (A+B)

Functional features

- Rated audio output: 1000 W overall, distributable freely among the zones with a maximum limit of 250 W per single zone.
- Backlit 4.3" display with touch screen for selecting the alert and evacuation zones and enabling navigation for adjusting volume levels, configuring the equipment and viewing failures.
- Handheld fireman's paging microphone.
- Sending out of pre-recorded EVACUATION and ALERT messages.
- Sending out of pre-recorded BROADCAST messages (i.e. spots, announcements, sound bells).
- Playing back of pre-recorded messages via monitor loudspeaker.
- 7 off controlled input contacts, configurable for playing the evacuation and/or alert messages to the programmed zones or for resetting the messages.
- 1 off music input for sound sources.
- 1 off auxiliary input configurable as a music source, a call with precedence activation or a call with automatic activation (VOX).
- 3 off configurable relay outputs.
- Double A+B output for each zone.
- Event log (list of failures and/or alarms that have occurred in the system).
- Double LINK line for connecting other VAIE 7M00 (up to a total of 6 units).
- Multilanguages management.
- Protected local button for placing the system in an emergency state, equipped with its own LED.
- Local reset button.
- 3-band equalisation for each zone output.
- 3-band equalisation for each music input.
- Built-in SD/USB input for background music MP3 player.
- Independent selection on each zone of the various audio sources (MUSIC IN, AUX IN, MP3 player and EXT).
- Up to 8 pre-recorded messages can be retrieved from outside through input contacts (of which 2 fixed emergency messages - plus 6 that can be classed as emergency / evacuation / broadcast messages).
- Possibility of setting up to 16 timers for the programmed playing out of the broadcast messages with the possible activation of signalling relays.
- Up to 16 MBT 1106 and/or MBT 1112 broadcasting microphone stations can be connected.
- Up to 4 FMD 2001 and/or FMD 2012 remote emergency units can be connected (or, as an alternative, up to 2 touch screen units TSC 6000-EN).
- EN54-4 certified battery charge unit for 24VDC secondary power supply (batteries not included).
- Mounting on 19" rack.

VAIE 7M00

All-IN-ONE System for wall mounting



List of optional functions

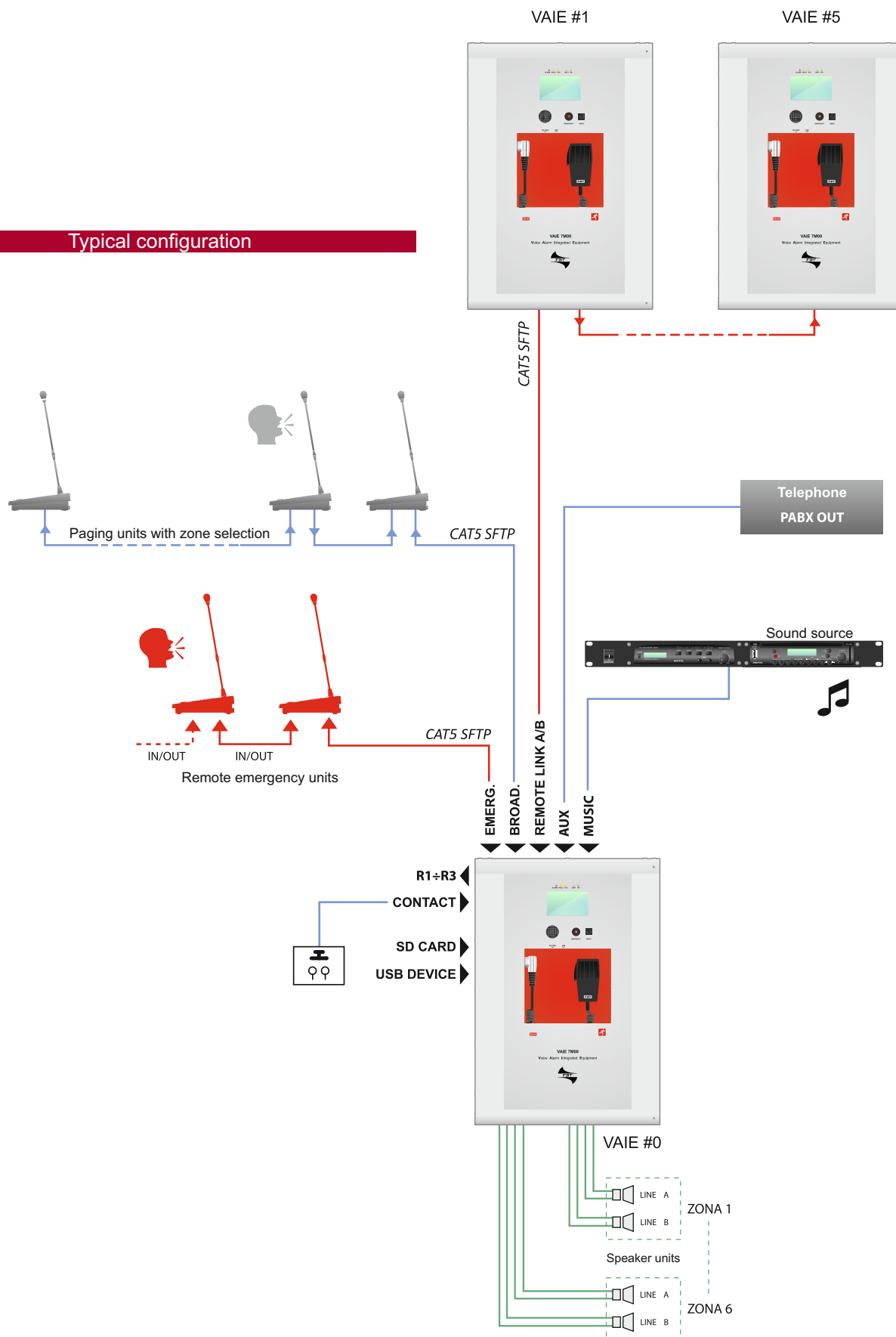
CLAUSE	DESCRIPTION
7.6.2	Manual muting of voice alarm condition
7.7.2	Manual resetting of voice alarm condition
7.9	Output for signalling a voice alarm condition
8.3	Indication of fault affecting the transmission paths
8.4	Indication of fault affecting the alarm zones
10	Manual control of voice alarms
11	Interface for external control device(s)
12	Emergency microphone(s)
13.14	Redundant power amplifier

List of the auxiliary functions

DESCRIPTION
Broadcast calls
Broadcast calls



Typical configuration





MODEL	VAIE 7M04		VAIE 7M06	
Rated audio output @230Vac *typical distortion at 25 W 0,025%	1000W / D=2,5%*			
Rated audio output @24Vdc *typical distortion at 25 W 0,025%	800W / D=10%*			
Display	4,3", backlit with touch screen, 480 x 272 pixel			
N. of VAIE 6500 x system	Max. 6 (ID 0 ÷ 5)			
N. of zones / amplifiers	4		6	
Inputs				
Emergency microphone • Sensitivity / Impedance • Frequency response • S/N ratio	Balanced XLR-F on the front door Signal level: 20mV / 10kOhm 60 ÷ 20.000Hz 72dB			
Paging units (BROAD.) • Sensitivity / Impedance • Frequency response • S/N ratio	n° 1 off RJ45 paging units (PA) Max. signal level 1400mV / 85kOhm 60 ÷ 20.000Hz 83dB			
Emergency units (EMG.) • Sensitivity / Impedance • Frequency response • S/N ratio	n° 1 off RJ45 for emergency microphone units Max. signal level 1400mV / 85kOhm 60 ÷ 20.000Hz 83dB			
AUX (LINE-VOX) • Sensitivity / Impedance • Frequency response • S/N ratio	Balanced with terminals (HOT-COM-GND) Programmable in ON/OFF/VOX with A.P.T. Precedence input with contact closing activation 134mV / 31kOhm 90 ÷ 20.000Hz 81dB / 85 dBA			
MUSIC / EXT • Sensitivity / Impedance • Frequency response • S/N ratio	Balanced with terminals (HOT-COM-GND) 134mV / 31kOhm 90 ÷ 20.000Hz 81dB / 85dBA			
Equalisation				
• Independent equalisation for each output zone	3 band equaliser Bass tones (100Hz): ± 10dB Mid-range (1kHz): ± 10dB Treble tones (10kHz): ± 10dB			
• Independent equalisation for each music input				
Outputs				
Constant voltage outputs with double lines (A/B) <i>One zone output can be configured as a standby for the others</i>	4 zones for 100V lines Minimum 40 Ohm		6 zones for 100V lines Minimum 40 Ohm	
REMOTE LINK A/B - Output level / Impedance - Sensitivity / Input impedance	n° 2+2 RJ45 for connection with another VAIE 6500 unit 1V / 400 Ohm 3600mV / 3kOhm			
Emergency controls - Controlled inputs CONTACT - Outputs R1, R2, R3	Programmable for normally active or normally inactive state 7 off inputs with diagnostic 3 relays for signalling, state of emergency and fault N.O-N.C-Exchange state			



MODEL	VAIE 7M04	VAIE 7M06
General informations		
Mains power supply @230Vac	100~264Vac 47/63Hz +10 / -15% 1280W full load (4 amp active) 100W no load	100~264Vac 47/63Hz +10 / -15% 1280W full load (4 amp active / 2 amp stand-by) 100W no load
Secondary power supply @24Vdc (26,3Vcc)	40A full load	40A full load
Secondary power supply Consumption @24Vcc	2A no load / quiescent 0,3A no load / energy saving	2A no load / quiescent 0,3A no load / energy saving
Batteries	Only use 40 Ah batteries	
Charger / Power supply unit	16A (I max. a) 20A (I max. b) 21V (final voltage - detached battery) 27,2V (complete load voltage)	
Environmental operating conditions	Temperature +5°C ÷ +40°C Relative humidity 25% ÷ 75% (non-condensing)	
Type of mounting	Wall / To 19" rack with optional accessory	
Dimensions (W x H x D)	16,92 x 24,40 x 9,44 inch	
Net weight (without batteries)	48,50 lb	