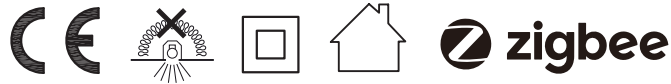


INSTALLATION AND OPERATING INSTRUCTIONS FOR LED EMERGENCY DOWN LIGHT

Art.no. 960702CC




Specitication

Power Supply : 220-240VAC, 50/60 Hz
 Power Consumption : Max. 4W
 Ta : 0°C...+45°C
 luminaire Class : Class II

Operation : Non maintained
 IP Rating : IP20
 Function : Zigbee wireless, DALI with Auto test
 Lumen output : 400 lm Ra:70

Precautions

This product should be installed by a registered electrician in accordance with local standards and electrical regulations. Take care to ensure the mains supply is isolated before installation. RISK OF FIRE-Required clearance from structural members and building elements, SCB=0mm HCB=0mm

 **Recessed LED Downlight Caution:** The luminaire is not suitable for covering with thermally insulated material. The luminaire should be positioned so that prolonged staring into the luminaire at a distance closer than 0.3 m is not expected.

LED module is not replaceable; when the light source reaches its end of life the whole luminaire shall be replaced.

Service & Operation

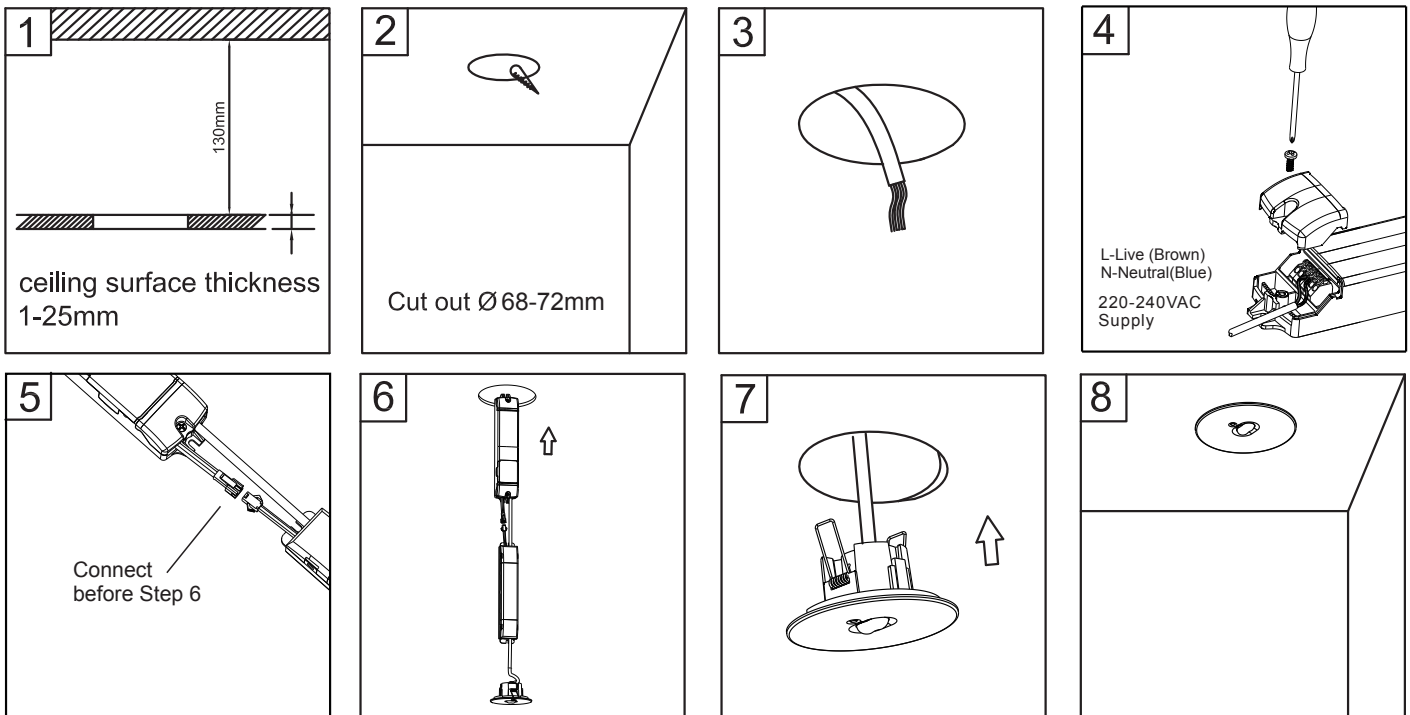
Normal Operation: The green indicator light on face plate stays on. The LED will go out if the mains supply fails, the internal charger malfunctions, or the unit in test mode.

Battery: Sealed LiFePO4 rechargeable battery pack. Battery should be replaced when the required duration is no longer achieved. To avoid any damage to the fixture and ensure its performance, the battery should be replaced with same brand and type.

Test Switch: Press the test switch button, LED indicator will go out and the Fixture will be illuminate from its battery pack.

LED lamp: Non replaceable.

Installation

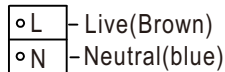


Technical Information

Model Number	Art.no	Input Voltage	Charge Duration	Discharge Duration	Battery	Power Consumption	LED	Lumen ouput
ControlLed Inf	960702CC	220-240V~ 50/60Hz	24h	1h	2*18650 LiFePO4 6.4V 1.5Ah	4W	3535 3W LED	400 lm

Wiring Instruction

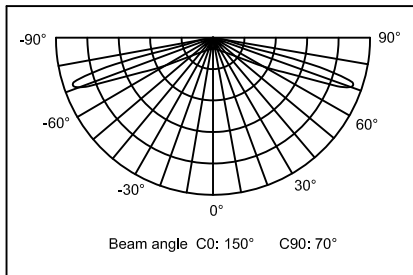
No Maintained Wiring:



Non-maintained: Connect L,N

Mounting Spacing

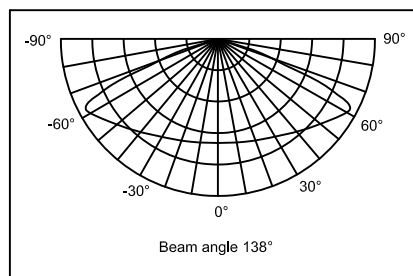
Oval lens for pathway application



Mounting height	Spacing distance
2.5m	22 m
3.0m	25 m
3.5m	27.5 m

Compliant EUROPE standard EN1838 Illuminance requirement:
Escape route up to 2 m wide, 1 lx on the central axis
and 0.5 lx at 50% of the width.

Round lens for open area application



Mounting height	Spacing distance
2.5m	13.0m
3.0m	14.5m
3.5m	16.0m

Compliant EUROPE standard EN1838 Illuminance requirement:
Escape route up to 2 m wide, 1 lx on the central axis
and 0.5 lx at 50% of the width.

AUTO Testing Operation

Commissioning test-

Connection of the mains supply will initiate commissioning where the battery will remain on charge for an uninterrupted 24 hours, An interruption of the mains supply will reset the counter to zero. After 24 hours the luminaire will be put into a duration test for the rated period. immediately followed by another 24hr charge period.

Function test-

A 5 second functional test is carried out at 1 week interval.

Duration test-

A full rated duration test is carried out automatically at 52 weeks intervals.

STATUS of LED indicator

● Indicator Green		● Indicator Red	
— Stable Green	Working well / Zigbee is connected	— Stable Red	Lamp failure
- - Slow Flashing	Duration Test	- - Slow Flashing	Battery failure
..... Fast Flashing	Function Test Fast Flashing	Emergency driver circuit failure
- - Alternate Flashing	Inhibit mode	- - Alternate Flashing	Zigbee devices has no network yet, try to find and connect a new network
- - Quick Flashing	Zigbee reconnecting		
●/● Identifiable flashing, the indicators flash 8 times to display the number of Zigbee devices. Red means 0, green means 1			
○ Indicators off	Rest mode; Emergency mode; Extended emergency mode		

Note: **Slow Flashing:** LED indicator flashes 1 time in 1 second;

Fast Flashing: LED indicator flashes 10 times in 1 second;

Alternate Flashing: The green indicator Flashes 2 times, then pauses for 1 second. Execute cycle;

Quick Flashing: Indicator is on for 0.15 and off for 2S;

Identifiable flashing: The red or green indicators flash 8 times, then pause for about 2~10 seconds.