

**Emergency Lighting
KANON CC IP65**

**INSTALLATION
INSTRUCTION
SHEET**



- This product shall be installed by a qualified electrician and installed in accordance with latest IEE electrical regulations or the manufacturer's requirements.
- The light source of this luminaire is not replaceable. When the light source reaches its end of life the whole luminaire shall be replaced.

TECHNICAL DATA

Art.no:	960612CC
Rated Power supply Operation	220-240VAC 50/60Hz Non-Maintained
Power consumption	10W
Power output	10W
Battery type inbuilt	LiFePO ₄
Color temperature	6500K
Ra	>80
Nominal lumen output	800lm/lamp x 2 lamps
IP Rating	IP65
Ambient Temp	0~45°C
Test complies	DALI and Zigbee wireless
Protection Class	Class II
Installation	Wall mounting



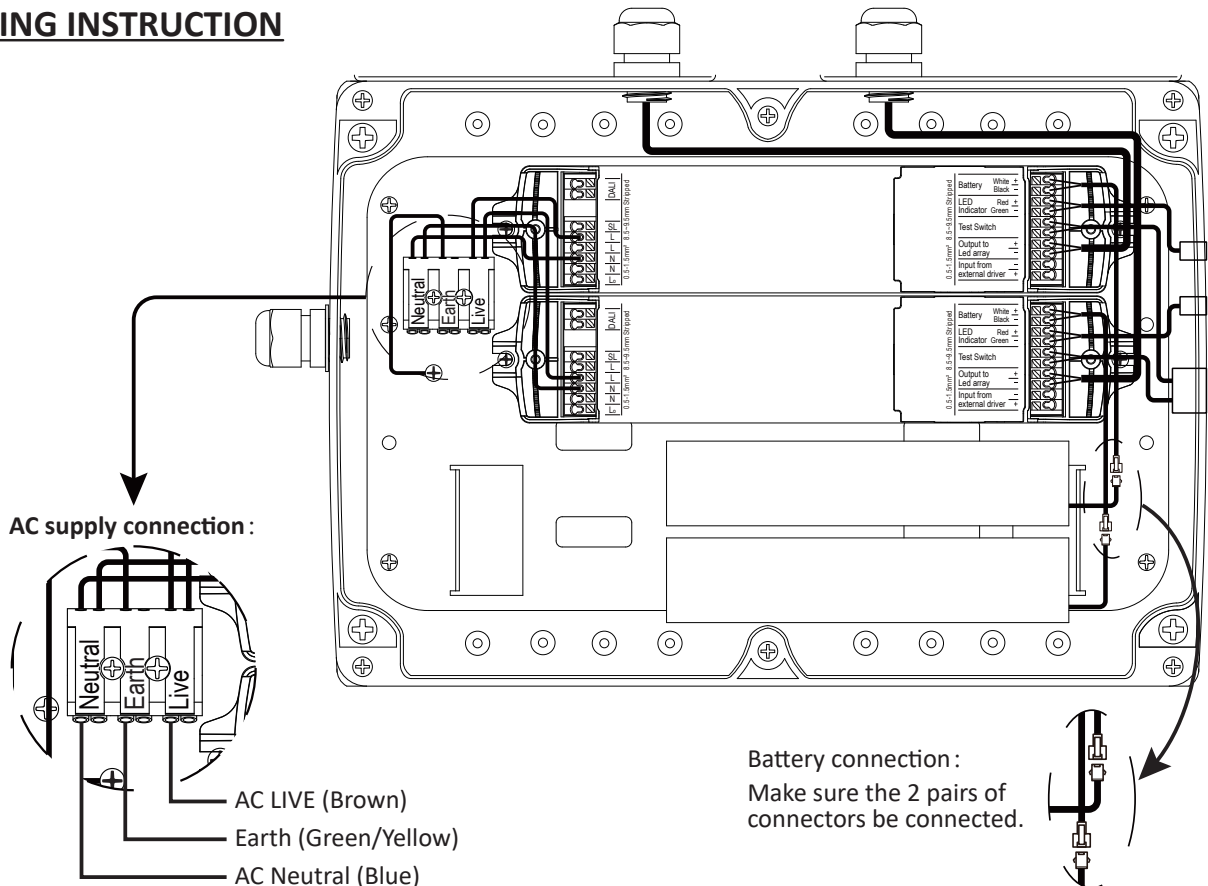
SERVER & OPERATION

Normal Operation: Non-Maintained Emergency operation.

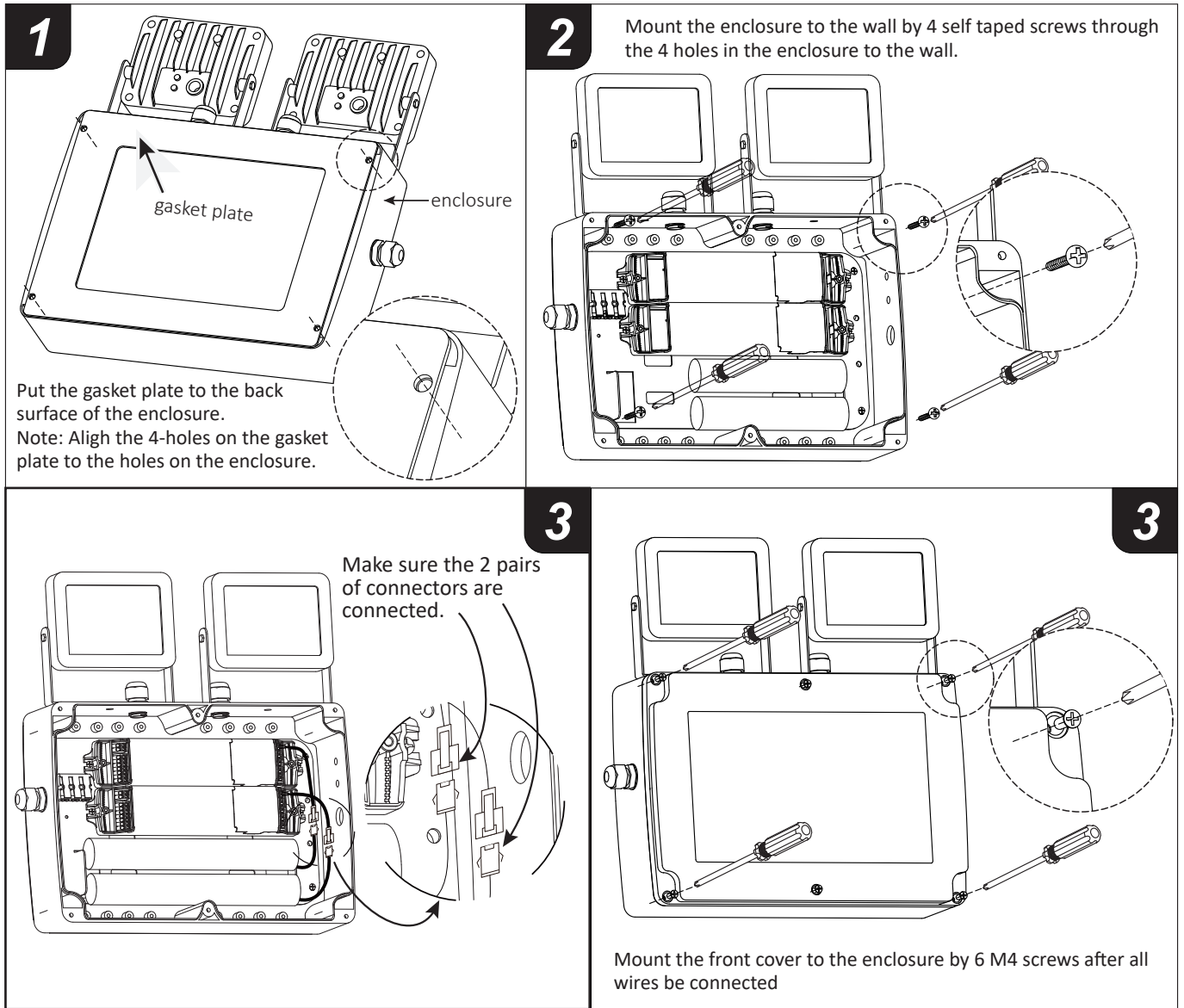
Battery: Sealed Lithium Iron Phosphate(LiFePO₄) rechargeable battery pack. Battery should be replaced when the required duration is no longer achieved. In case of a replacement, same brand and type of battery pack must be used.

Test Switch: Press the test switch button, LED indicator will turn off and the LED sign will be illuminate from its battery pack.

WIRING INSTRUCTION



WALL MOUNTING STEPS



TEST OPERATION: Commissioning Test

Connection of the mains supply will initiate commissioning, where the battery will remain on charge for an uninterrupted 24 hours. An interruption of the mains supply will reset the counter to zero. After 24 hour the luminaire will be put into a duration test for the rated period. Immediately followed by another 24 hours charge period.

TEST OPERATION: Function Test

A 5 seconds function test is carried out at 1 week interval.

TEST OPERATION: Duration Test

A full rated duration test is carried out automatically at 52 weeks interval.

STATUS of LED indicator

●	Indicator Green		●	Indicator Red	
—	Stable Green	Working well / Zigbee is connected	—	Stable Red	Lamp failure
- -	Slow Flashing	Duration Test	- -	Slow Flashing	Battery failure
.....	Fast Flashing	Function Test	Fast Flashing	Emergency driver circuit failure
- . - .	Alternate Flashing	Inhibit mode	- . - .	Alternate Flashing	ZigBee device has no network.
- - -	Quick Flashing	Zigbee connecting or reconnecting	- - -	Alternate Flashing	Not configured with network information
●/●	Identifiable flashing, the indicators flash 8 times to display the number of Zigbee devices. Red means 0, green means 1				
○	Indicators off Rest mode; Emergency mode; Extended emergency mode				

Note: **Slow Flashing:** LED indicator flashes 1 time in 1 second;

Fast Flashing: LED indicator flashes 10 times in 1 second;

Alternate Flashing: The green indicator Flashes 2 times, then pauses for 1 second. Execute cycle;

Quick Flashing: Indicator is on for 0.1S and off for 2S;

Identifiable flashing: The red or green indicators flash 8 times, then pause for about 2~10 seconds.