

AuraSTRX



User Interface Guide v1.0.0

Table of contents

Overview	3
Part 1 — Quick Start: Listen now.....	4
Part 2 — Change the language	6
Part 3 — Start, pause, or resume a stream	6
Part 4 — Choose or switch broadcast (open or secured).....	7
Part 5 — Connect to a secured broadcast (password or QR)	8
Part 7 — Events & System States (Consolidated).....	9
Weak Signal	9
Disconnected	9
Volume Minimum	10
Transmitter Paused	10
Charging/Discharging	10
Low Battery (<10%).....	10
Sleep	11
Deep Sleep	11
Troubleshooting (Quick Answers)	12
Part 8 – AuraConnect Software	
Update Firmware	

Revision

Author	Version	email	Date	Comment
Ulrich PARE	1.0.0	project@audiofils.com	28/08/2025	First revision

Overview

AuraSTRX is a wireless audio stream receiver designed for quick, reliable listening in public or private spaces. The UI keeps key info visible: volume, battery (%), signal strength, and play/pause. Contextual alert banners appear when action is needed (weak signal, transmitter pause, volume minimum, connection issues).



Figure – Overall UI

Marker	Description
①	Power button (short/long press)
②	Play/Pause
③	Menu / Back
④/⑤	Volume + / -
⑥	USB-C port
⑦	QR code module
⑧	Bel Clip

Part 1 — Quick Start: Listen now

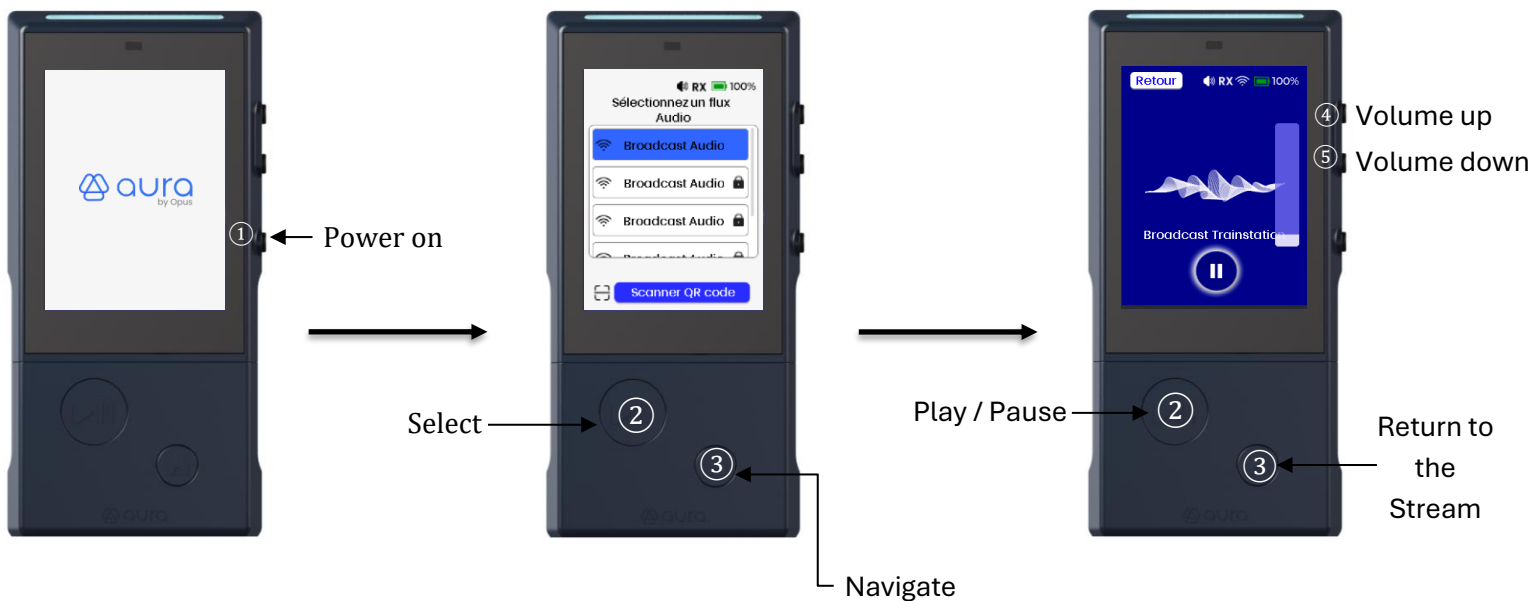
Goal: start listening to a nearby broadcast in under 30 seconds.

1. Short-press Power to turn on AuraSTRX.
2. In the Stream List, highlight the desired broadcast (touch or press ③ (Menu) to navigate). And Confirm with a tap or press ② (Play/Pause).
3. Tap on Play/Pause icon on the screen or press ② to start listening to the broadcast selected
Adjust volume with Volume ± on the side using ④/⑤ or use the slider on the screen to adapt it to your convenience.

Tips:

- The list is sorted by signal strength (strongest first).
- If a “lock” icon appears, see Part 5 to connect to secured broadcasts.

Figure – Quick Start



Part 2 — Change the language

Goal: switch UI language for labels and prompts.

1. From any screen, press and hold Menu + Play/Pause for ~1 second to open Language screen.
2. Select the desired language, FR / EN / ES (touch or press ③ to navigate).
3. Confirm with a tap or press ②.

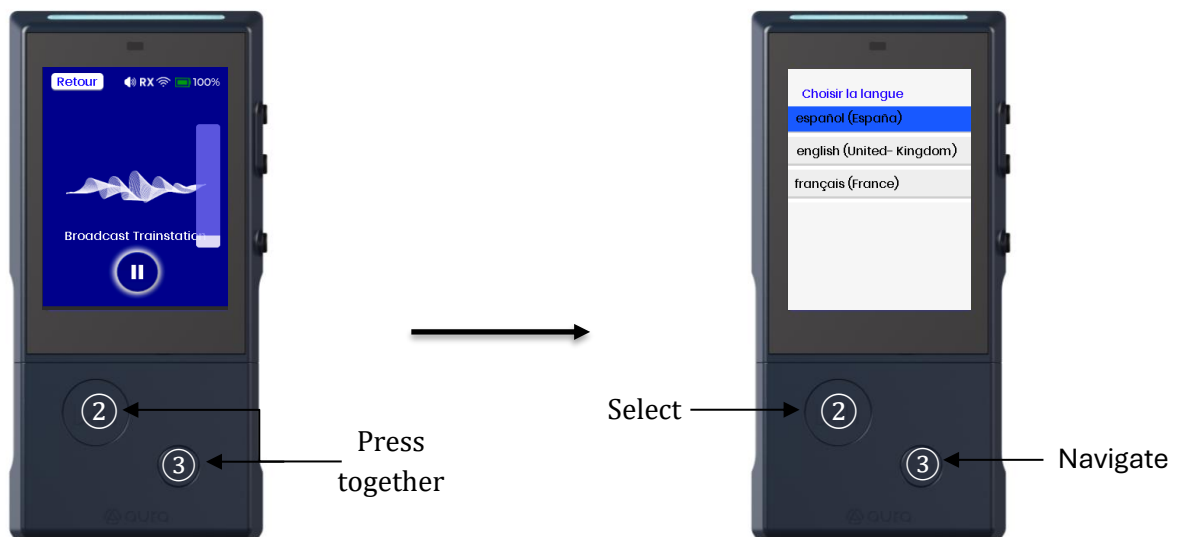


Figure – From any Screen → Language selection

Part 3 — Choose or switch broadcast (open or secured)

Goal: pick the right broadcast or change it during use.

1. Open the Stream List (③ from Any Screen except the Language screen).
2. Navigate through the panel to the desired broadcast by touch or ③ Menu button.
3. Confirm with a tap or ② (Play/Pause) to switch immediately.
4. If the broadcast is locked, the Identification screen will open (see Part 4).

Tips:

- Signal bars show expected quality; prefer stronger signals when possible.

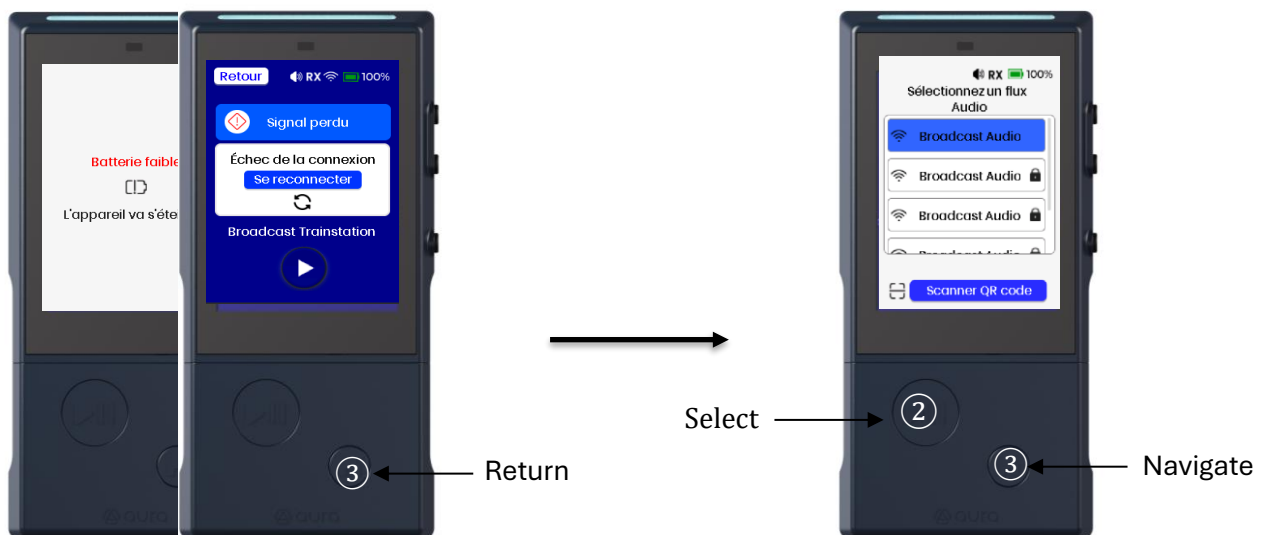


Figure – Any Screen to Stream list with signal bars and lock icons

Part 4 — Connect to a secured broadcast (password or QR)

Goal: access locked broadcasts safely and quickly.

1. On the Identification screen, either:

2. a) Enter the password via the on-screen keyboard then tap on connect or press ②.

On success, a choice panel appears to save credentials or not. Confirm with a tap or ② for yes and ③ for no.

On failure, a short message appears; retry entering the password.

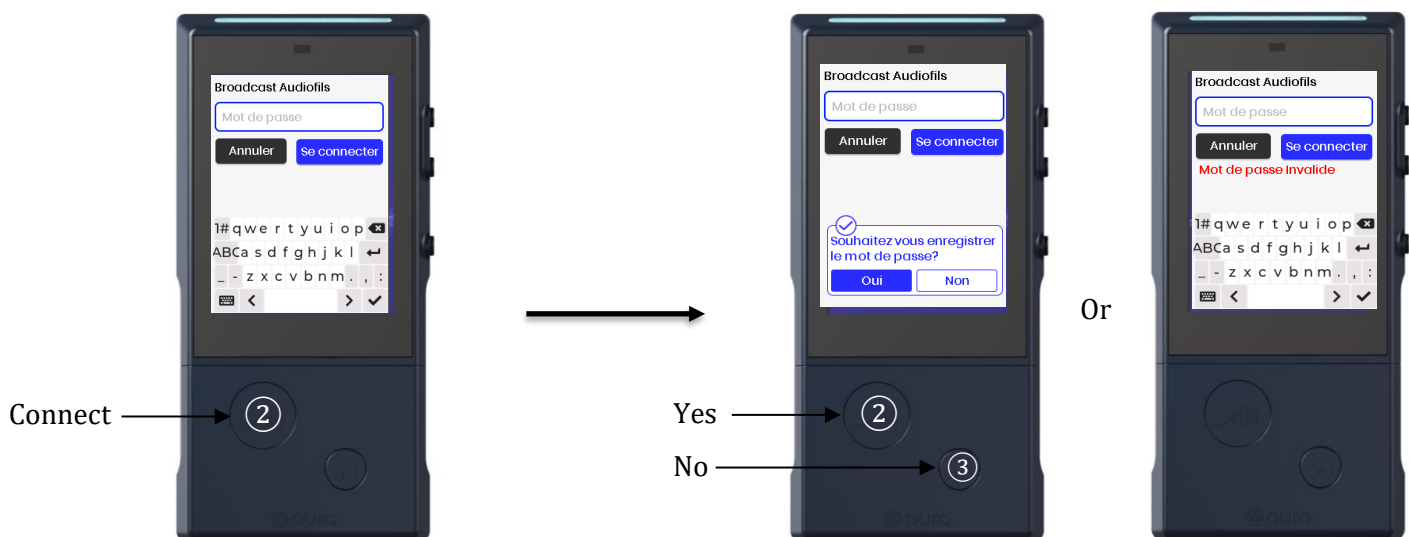


Figure – Identification: Password entry

b) Select QR by tapping on the screen button dedicated, aim the laser to the QR code. The scanner activates briefly.

On success, credentials are saved then the user is redirected to the Audio Screen. On failure, a short message appears; After 10 seconds aim the laser to the QR code to connect.

- If the password changes at the source, re-enter or re-scan the QR code.
- Recent credentials may be kept for convenience



Figure – Identification: QR scan flow

Part 5 — Events & System States (Consolidated)

Weak Signal

Trigger/Condition: RSSI below threshold or unstable link.

What it means: Audio quality may degrade; risk of disconnect.

What to do:

1. Move closer to the transmitter; avoid walls/metal obstacles.
2. Hold device upright; keep clear line-of-sight if possible.
3. Consider switching to a stronger broadcast from the Stream List.

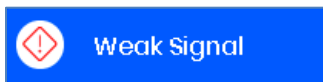


Figure – Alert banner — Weak signal



Disconnected

Trigger/Condition: Signal lost or authentication/session error.

What it means: The stream has stopped due to link loss or an error.

What to do:

1. Wait for the auto-retry (a few seconds).
2. Tap Resync if offered.
3. If needed, open Stream List and reselect the broadcast.

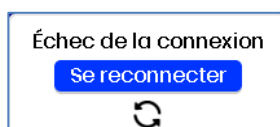


Figure – Alert banner — Disconnected

Notes: If secured broadcast changed password, you’ll need to re-authenticate.



Figure – Alert banner — Volume

Volume Minimum

Trigger/Condition: Volume set to minimum or muted.
 What it means: You won’t hear audio until volume is raised.

- What to do:
1. Press Volume + to raise the level.



Figure – Alert banner — Transmitter

Transmitter Paused

Trigger/Condition: Source/Auracast transmitter paused program.
 What it means: Audio is intentionally paused upstream.

- What to do:
1. Wait until the transmitter resumes.
 2. Stay on the current broadcast or switch to another if needed.

Auto-recovery: Playback resumes automatically when source restarts.



Figure – Charging/ Discharging overlay

Charging/Discharging

Trigger/Condition: USB power connected or not.
 What it means: Battery is replenishing; device remains usable.

- What to do:
1. Keep connected until it reaches a comfortable charge level.
 2. Avoid frequent very deep discharges for longevity.



Low Battery (<10%)

Trigger/Condition: Battery SoC drops below 10%.

What it means: Risk of shutdown; audio may stop unexpectedly.

What to do:

1. Connect USB power to charge.
2. Reduce screen-on time or enter Sleep to save power.

Auto-recovery: Returns to previous screen after 2 seconds.

Figure – Low Battery screen

Sleep

Trigger/Condition: Inactivity + accelerometer sensor conditions met.

What you see: Screen off; playback state preserved.

What it means: Power saving without full shutdown.

What to do:

1. Wake with movement or press any button (except Volume in some profiles).
2. Resume interaction on the current screen.

Auto-recovery: Auto-exits on wake conditions.

Notes: Estimated Autonomy > 1 week

Deep Sleep

Trigger/Condition: Extended inactivity with USB unplugged.

What you see: System unresponsive until wake action.

What it means: System off (no reception).

What to do:

1. Wake with movement or press any button.

2. Allow a few seconds for full system readiness.

Auto-recovery: No auto-exit; requires wake action.

Notes: Estimated Autonomy > 3 months

Troubleshooting (Quick Answers)

1. No sound → Check mute/volume; ensure stream is playing.
2. Unstable → Move closer or switch to stronger broadcast.
3. Password rejected → Re-enter with eye icon or re-scan QR.
4. Screen off → That's Sleep; wake with movement + IR positive (<50cm) or a button.
5. Power off → Long-press Power (~3 s).

Part 8 – AuraConnect Software

To update your AuraSTRX device, you need to download the AuraConnect software. This software will be the management tool for your AuraSTRX devices.

The first version of AuraConnect Software only allows you to update AuraSTRX devices.

Version 2 of AuraConnect will allow you to configure and update one or more connected devices using your computer or a network (only with AuraCH10-NET). This version will be available in Q1 2026.

To download the PC software (Mac and Windows), click on the following link or scan the QR code, then follow the software installation procedure.

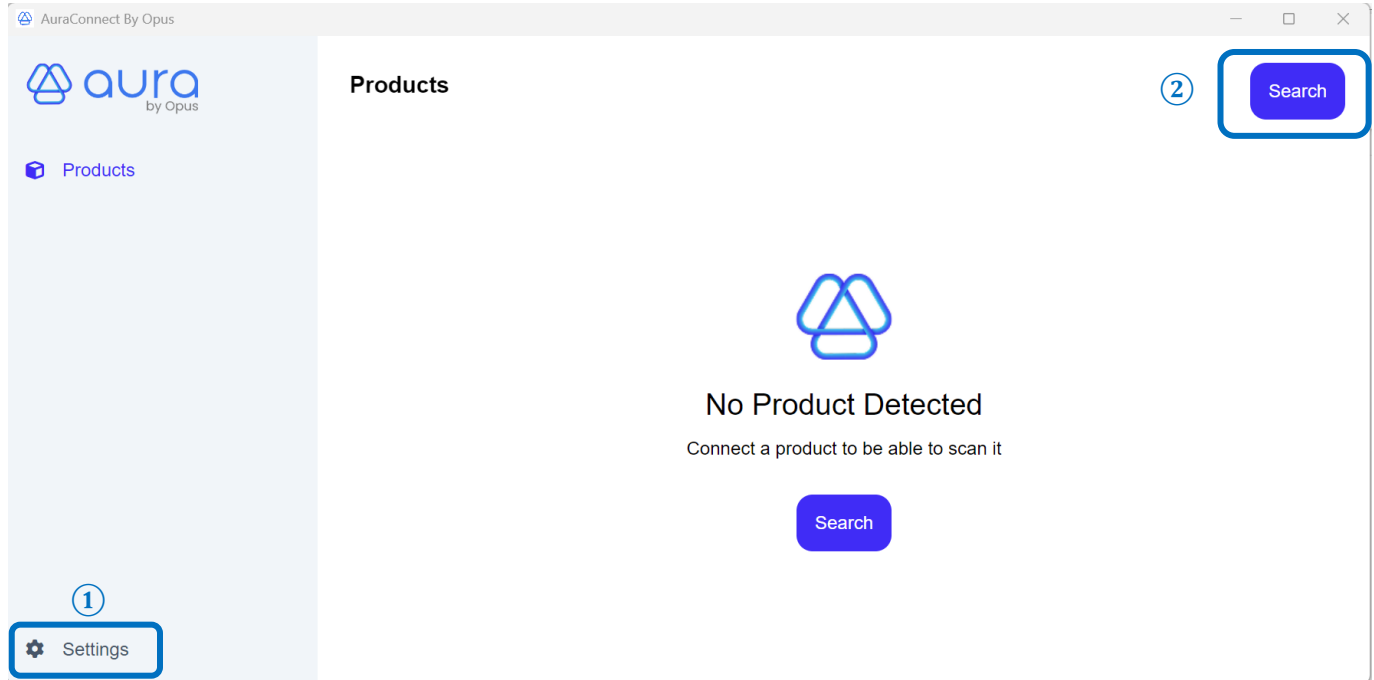


<https://mega.nz/folder/9rc0mYRL#KqwBxdMkeDbBv6SQJxi17g>

Update Firmware

Once you have finished installing AuraConnect on your computer, open the software.

You are now on the main interface of the AuraConnect software.



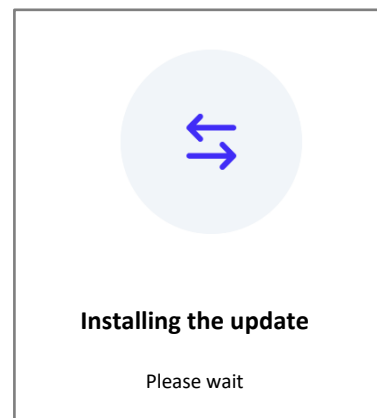
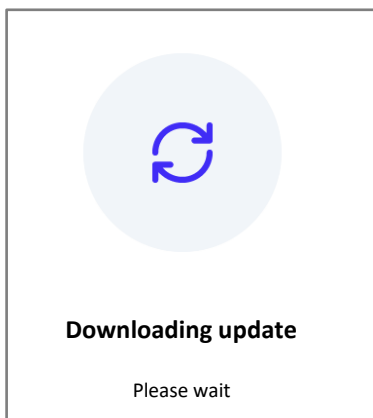
Marker	Description
①	Language settings and software version display
②	Searching for AuraSTRX devices connected via USB-C

If AuraSTRX devices are connected via your USB-C cable or over the network (only with the AuraCH10-NET version), the list of connected devices will appear. You can then check for the latest device update. An internet-connected PC is absolutely necessary to perform product updates.

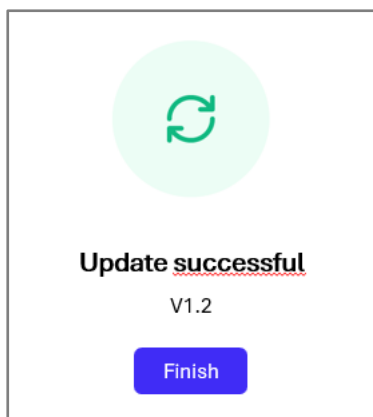
If an update is available, a blue button labeled "Start Update" will be visible. Simply click the button to begin the update.

Products					Search
Référence	Serial Number	Connecté	Version	Mise à jour	
AuraSTRX	RTBA233322AE1134	OUI	V0.1	Start the update	
AuraSTRX	RTBA233322AE113E	OUI	V0.2	Lancer la mise à jour	
AuraSTRX	RTBA233322AE12ZZ	OUI	V0.1	Start the update	
AuraSTRX	RTBA233322AE1144	OUI	V0.1	Start the update	

When you start the update, the following messages appear:



Please wait for the following confirmation message before unplugging your device.





Your update is complete!!


10. Warranty and technical support

The AuraSTRX benefits from a 5-year manufacturer warranty (excluding battery and accessories) corresponding to 3 years + a 2-year extension valid upon product registration.

If you have any problems or questions regarding the installation and use of your AuraSTRX, you can contact our technical support:

 **Email** : support@opus-technologies.fr

 **Address** : Opus Technologies, 4 Allée Pierre-Gilles de Gennes, 33650 Martillac, France

 **Telephone** : +33 (0)9 81 24 00 06

Thank you for choosing AuraGate and we remain at your disposal for any further assistance.

INSTALLATION MANUAL VERSION:

- Manual version: V1.0 08.2025. Associated firmware: V1.0